

Recombinant Staphylococcus aureus Protein A(Cys)

Cat. No. Protein A-2939S **Lot. No.** (See product label)

SPECIFICATION

Product Overview

Protein A is A cell wall protein secreted by Staphylococcus aureus, also known as Staphylococcal Protein A(SPA), Natural protein A is mainly composed of three functional regions: signal peptide, 5 antibody binding domains and cell wall peptidoglycan binding domains. The most studied and applied region is the 5 antibody binding domains with antibody binding functions. Protein A(containing cysteine) was genetically engineered to express the antibody binding domain (E-D-A-B-C) of natural protein A, which has the complete antibody binding function of natural protein A. At the same time, cysteine was added at the end of the amino acid sequence to facilitate directional coupling. The sulfhydryl group in cysteine would partially form intermolecular disulfide bonds to form polymers. It can enhance the binding ability of antibodies.

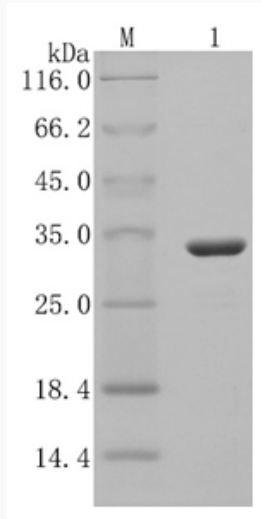
Species	Staphylococcus aureus
Source	E.coli
Tag	Non
Form	5mM PB, pH7.4
Molecular Mass	34.3kDa
Purity	≥95%(SDS-PAGE)
Storage	Freeze-dried powder -20±5°C, after dissolution to avoid repeated freeze-thaw.

 Tel: 1-631-559-9269 1-516-512-3133

 Email: info@creative-biomart.com  Fax: 1-631-938-8127

 45-1 Ramsey Road, Shirley, NY 11967, USA

SDS-PAGE



 Tel: 1-631-559-9269 1-516-512-3133

 Email: info@creative-biomart.com  Fax: 1-631-938-8127

 45-1 Ramsey Road, Shirley, NY 11967, USA